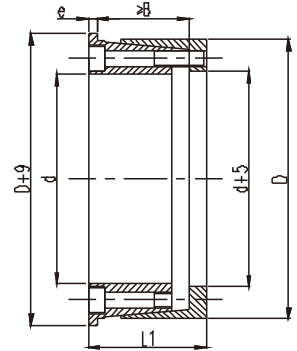


REACH 12

推荐安装尺寸:

轴: h8 Shaft: h8

毂: H8 Hub: H8



类似JB/T 7934 Z9标准

Similar to JB/T 7934 Z9 Standard

尺寸 Dimensions					传递的轴向力 Transmitted Axial Force	传递扭矩 Transmitted Torque	接触面压强 Contacting Pressure		DIN912-12.9级锁紧螺钉 DIN912-12.9 Locking Screw		
							轴Shaft	毂 Hub	数量 n	规格 Size	锁紧扭矩 Locking Torque
Φd	ΦD	L	L1	L2	Ft	Mt	P	P1			Ts
mm	mm	mm	mm	mm	KN	KNm	N/mm ²	N/mm ²			Nm
100	145	75	5	65	192	9.6	102	70	8	M12x60	145
110	155	75	5	65	191	10.5	93	66	8	M12x60	145
120	165	75	5	65	216	13	96	70	9	M12x60	145
130	180	84	6	72	287	17.8	100	78	12	M12x70	145
140	190	84	6	72	287	20.2	94	69	12	M12x70	145
150	200	84	6	72	287	21.6	88	66	12	M12x70	145
160	210	84	6	72	360	28.8	101	77	15	M12x70	145
170	225	84	6	72	383	32.6	101	76	16	M12x70	145
180	235	84	6	72	431	38.8	108	82	18	M12x70	145
190	250	94	6	81	493	46.8	106	80	15	M14x75	230
200	260	94	6	81	526	52.8	100	77	16	M14x75	230
220	285	94	6	81	640	70	119	92	14	M16x75	355
240	305	112	7	98	731	88	96	75	16	M16x90	355
260	325	112	7	98	822	107	103	82	18	M16x90	355
280	355	120	8	106	910	128	96	75	20	M16x100	355
300	375	120	8	106	1000	151	99	79	22	M16x100	355
320	405	142	8	125	1280	206	101	80	18	M20x120	690
340	425	142	8	125	1420	242	106	85	20	M20x120	690
360	455	159	8	140	1770	319	113	89	20	M22x130	930
380	475	159	8	140	1770	337	109	87	20	M22x130	930
400	485	159	8	140	1770	355	101	83	20	M22x130	930
420	515	159	8	140	1980	410	107	87	22	M22x130	930