

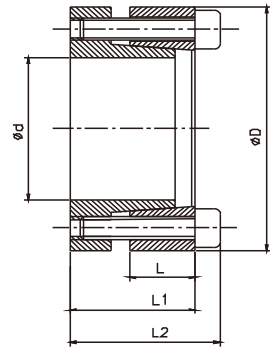
REACH 11

推荐安装尺寸:

Recommended Dimensions:

轴: h8 Shaft: h8

毂: H8 Hub: H8



尺寸 Dimensions					传递的轴向力 Transmitted Axial Force	传递扭矩 Transmitted Torque	接触面压强 Contacting Pressure		DIN912-12.9级锁紧螺钉 DIN912-12.9 Locking Screw			
							轴Shaft	毂 Hub	数量 n	规格 Size	锁紧扭矩 Locking Torque	
ϕd	ϕD	L	L1	L2	Ft	Mt	P	P1			Ts	
mm	mm	mm	mm	mm	KN	Nm	N/mm ²	N/mm ²	Nm			
20	47	14	28	34	29	294	328	139	5	M6x25	14	
22	47	14	28	34	29	323	298	139	5	M6x25	14	
24	50	14	28	34	38	455	353	169	6	M6x25	14	
25	50	14	28	34	38	474	338	169	6	M6x25	14	
30	55	14	28	34	38	569	282	154	6	M6x25	14	
35	60	14	28	34	51	885	322	188	8	M6x25	14	
38	65	14	28	34	51	961	297	174	8	M6x25	14	
40	65	14	28	34	51	1012	282	174	8	M6x25	14	
42	75	18	35	43	76	1594	313	176	7	M8x30	32	
45	75	18	35	43	76	1707	293	176	7	M8x30	32	
50	80	18	35	43	76	1897	263	165	7	M8x30	32	
55	85	18	35	43	87	2387	274	177	8	M8x30	32	
60	90	18	35	43	87	2604	251	167	8	M8x30	32	
65	95	18	35	43	98	3172	260	178	9	M8x30	32	
70	110	24	46	56	141	4937	262	167	8	M10x40	65	